

río serrano

hotel + spa



río serrano hotel + spa

# bienvenidos

---



**río serrano hotel + spa** is a regional, family-owned company founded by Jaime Arancibia Tagle, a professional constructor. He embarked on a tourism project in a remote area within Torres del Paine National Park. The company commenced its operations in 2002 as a 20-room lodge, which, over time, transformed into a 108-room hotel. Today, it is regarded as the tourist complex with the finest infrastructure in **Torres del Paine**.





**2000**

Jaime Arancibia conducted one of the earliest visits to the area.



**2002**

The lodge was inaugurated on **February 14th.**



**2005**

With 56 rooms, we became **Hotel Río Serrano.**



**2008**

We became the hotel with the highest capacity in **Torres del Paine** with 95 rooms.



**2018**

We inaugurated our spa and became **río serrano hotel + spa**.



**TODAY**

At **río serrano hotel + spa**, we proactively address the challenges and changes in our industry, continuously improving to maintain our leadership in the region.

## location

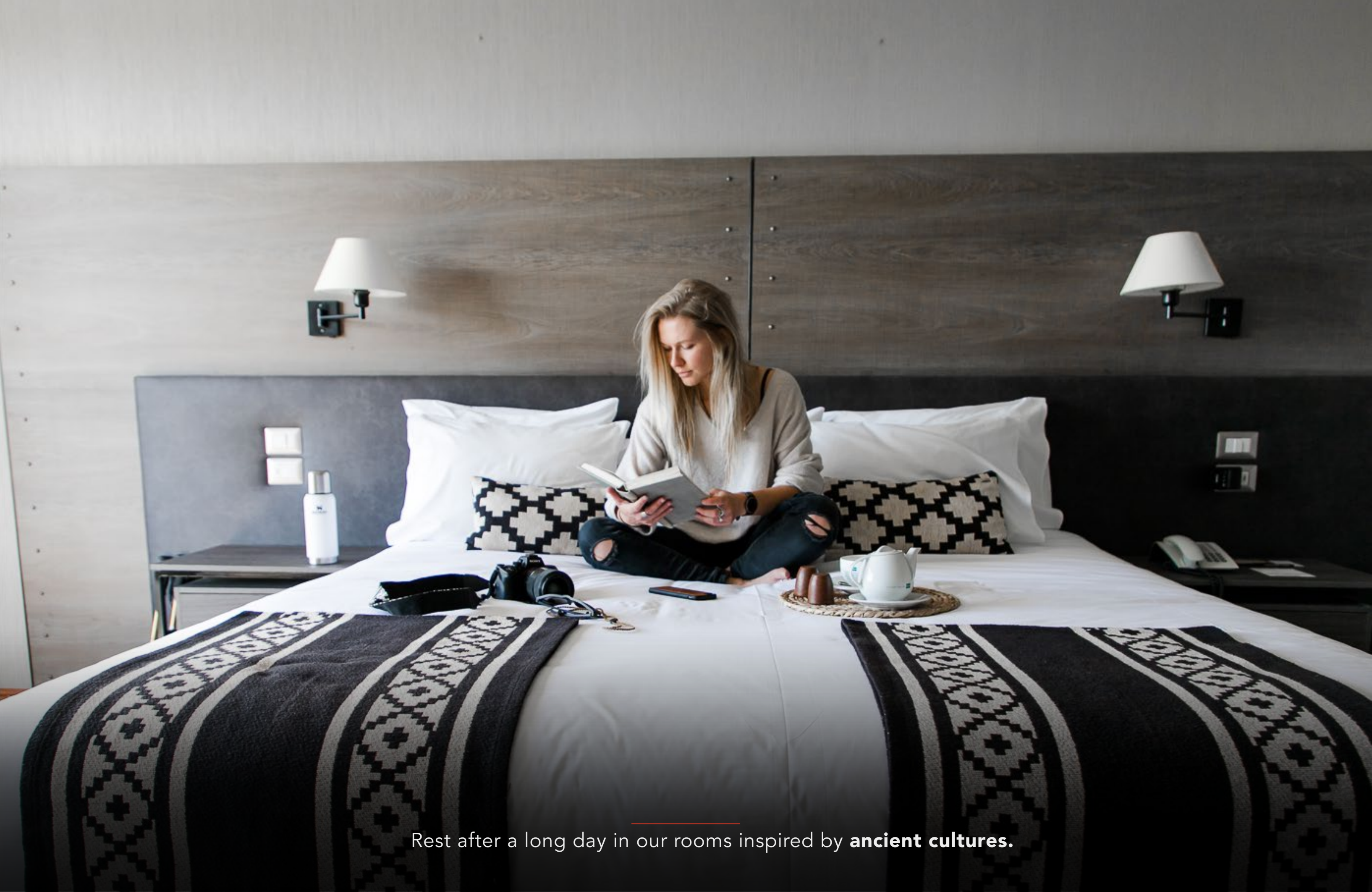
---

With a length of 38 kilometers, the **Serrano River** stands out for its mix of colors due to the sediments carried from the Southern Ice Fields. At the foot of this river lies our hotel, a 38,600 square meter property located in Villa Río Serrano, now considered the largest tourist complex in the Torres del Paine municipality.

The Villa Serrano area is renowned as a tourist destination, where you can find campgrounds, hostels, cabins, and lodges. Additionally, there are activities such as kayaking, hiking, horseback riding, fly fishing, and water-based activities.

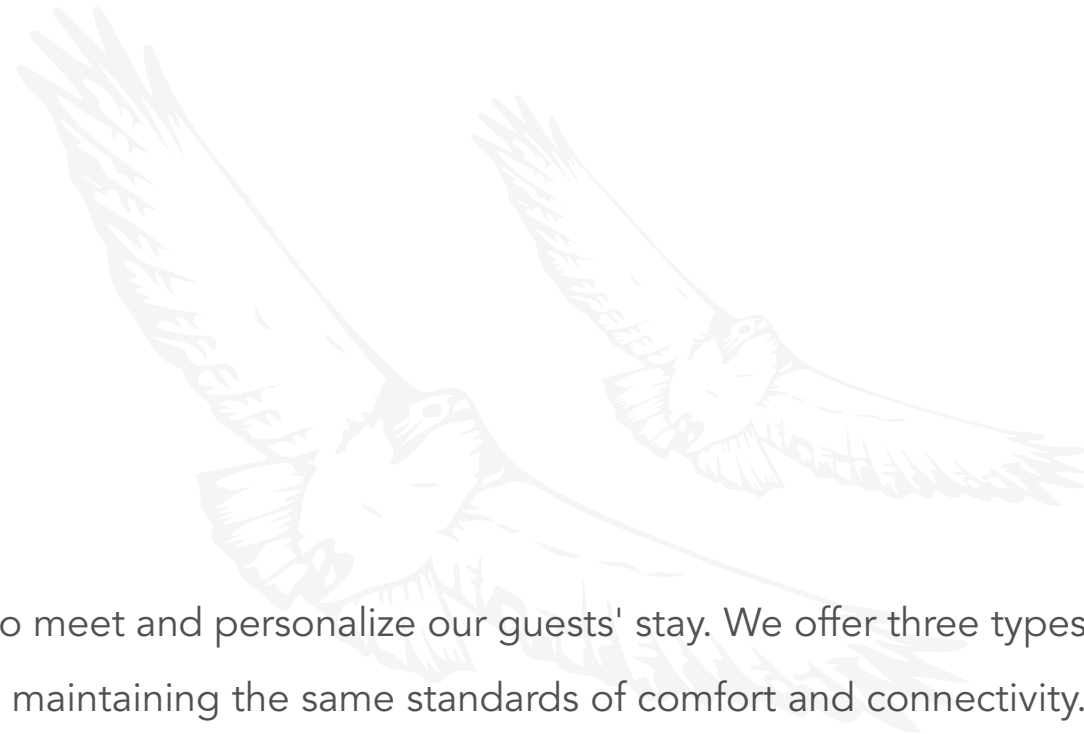
We are located at the southern boundary of Torres del Paine National Park, 86 kilometers from the nearest city, Puerto Natales, and 328 kilometers from the regional capital, **Punta Arenas**.





Rest after a long day in our rooms inspired by **ancient cultures**.

# rooms



At  **río serrano hotel + spa**, we strive to meet and personalize our guests' stay. We offer three types of rooms with different services while maintaining the same standards of comfort and connectivity. We invite you to explore our  **Superior**,  **Standard Plus**, and  **Standard** rooms.

Superior: 66 rooms.

Standard: 30 rooms.

Standard Plus: 10 rooms.

Additional bed: 10 beds.



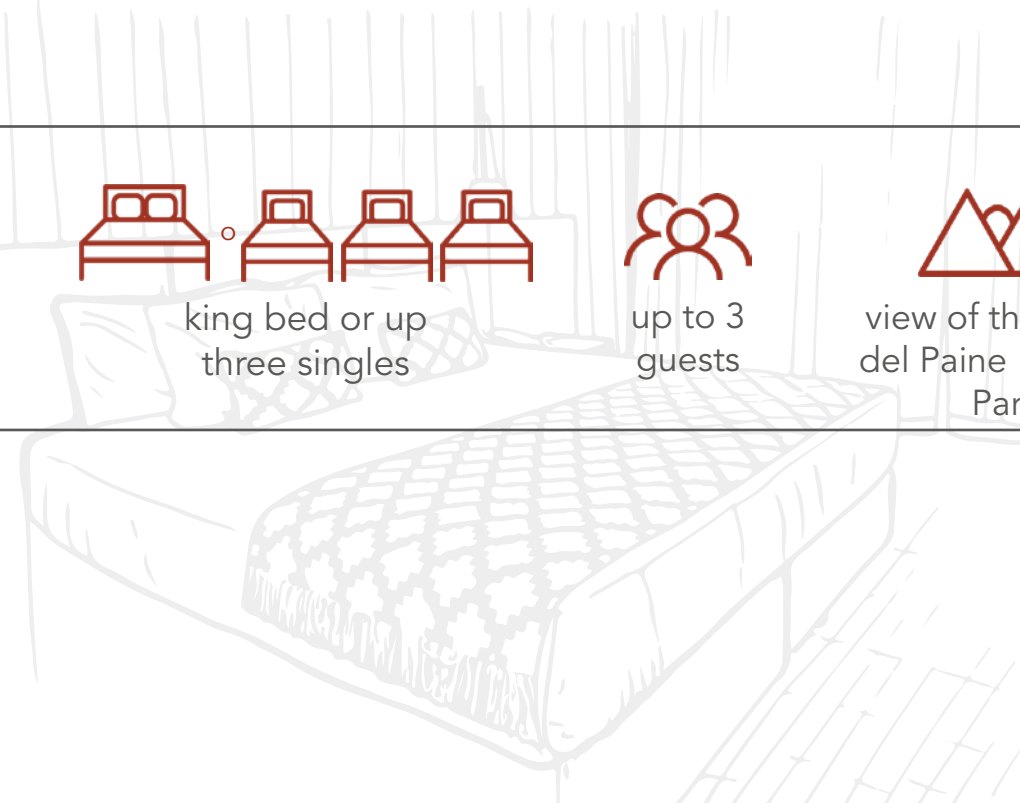
superior







# superior

A perfect blend of space, comfort, and the best view of the Paine Massif. Our Superior room features a spacious window that grants you the privilege of admiring the Serrano River and the majestic mountains of **Torres del Paine**.

The **Superior** room is decorated with elements and colors from the region, such as leather, characteristic of Magellanic ranches, wood, symbolizing harmony, creativity, and temperance, and brown color that provides a sense of comfort.



 32 m2	 king bed or up three singles	 up to 3 guests	 view of the Torres del Paine National Park
--	---	--	---



s t a n d a r d

# standard

With a view of **Villa Serrano**, this room offers all the comforts to ensure a perfect stay.

The **Standard** room is decorated with elements and colors inspired by Patagonia, with the main symbol being the arrow, which inspired protection to our ancestors. On the other hand, the gray color will provide an environment of balance and tranquility.

 24 m <sup>2</sup>	 king bed or two singles	 up to 2 guests	 view Villa Serrano
--	---	--	--



A modern hotel room with two beds, a desk, a chair, and a skylight. The room features a skylight in the ceiling, a desk with a chair, and two beds with white linens and patterned throws. The wall behind the beds has a tree branch pattern. The text "standard plus" is overlaid in the center.

standard plus

## standard plus

The perfect place to enjoy the stars and the Paine massif, accompanied by the beginning of the Southern Ice Fields. It's the right room to understand the force of the wind and the endless rain that our **Patagonia** delivers.

The **Standard Plus** room is decorated with symbols and colors characteristic of Patagonia; moreover, it's inspired by a fundamental element for life, the tree, which will provide us with peace and positivity.



28 m2



king bed or two singles



up to 2  
guests



view of the Torres  
del Paine National  
Park





Experience the warmth and comfort of our **common areas** in one of the coldest places in Chile.

## common areas

Our goal is not only to provide comfort in the rooms but also in our **common areas**, which span over **350 m<sup>2</sup>**. These areas have been specially designed to create a space of comfort and well-being. There's nothing better than enjoying a glass of wine by one of our fireplaces after a long day of activities.

Our **130 m<sup>2</sup>** living room features a design inspired by ancient cultures, offering our guests a place to relax and disconnect with a view of the Paine Mountain range.

We have two **common areas** with a fireplace, the first one measuring 32 square meters and the second one measuring 51 square meters, perfect for reading a book or simply admiring the beauty of the mountains.



Lorem ipsum





Enjoy our **recreational** spaces.

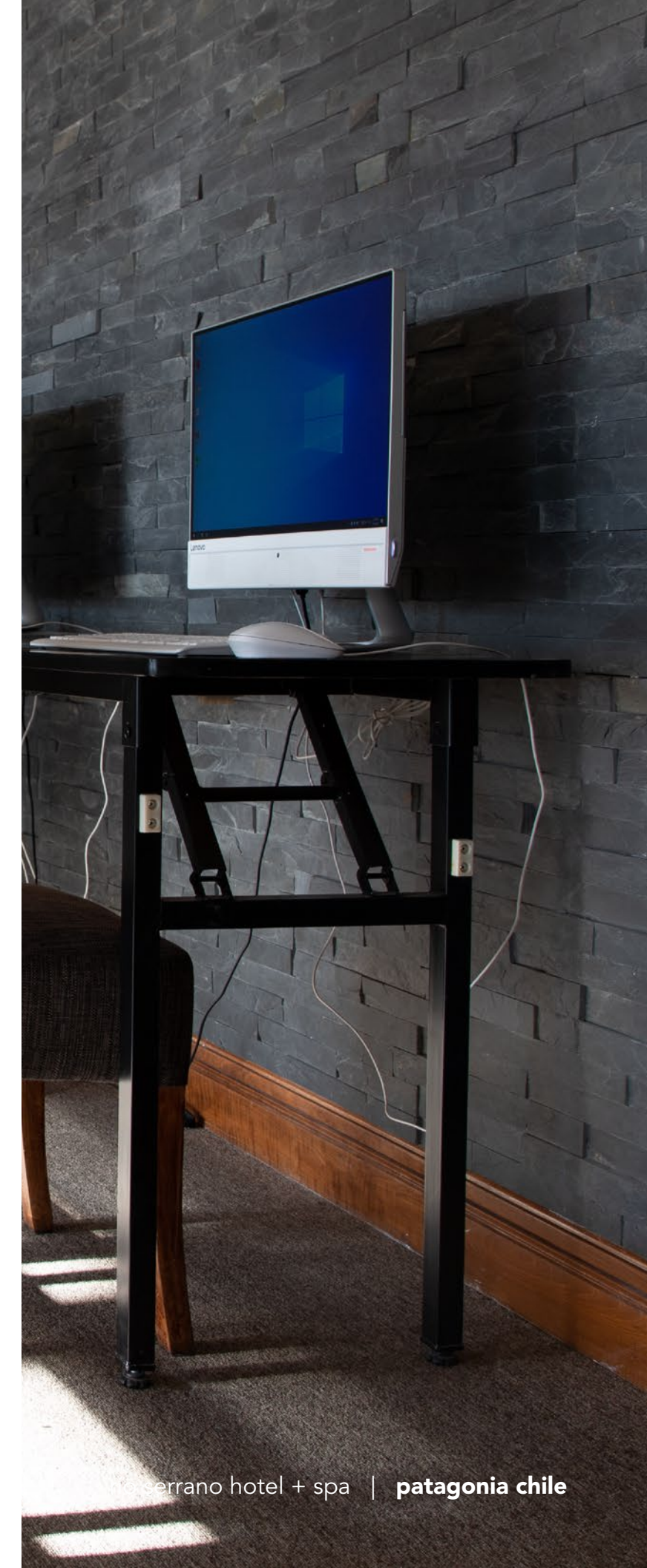


## common areas

---

At **río serrano hotel + spa**, we offer various recreational spaces such as a pool table, a children's playroom, a cinema room, and more.

Our **Business Center** features 2 computers in a 36-square-meter area, boasting high-speed internet and 24-hour availability





---

Experience the essence of **Patagonian** cuisine

---

# gastronomy

---

Our **Patagonian cuisine** is deeply rooted and represented by its products, blending memories, stories, traditions, and flavors through an interpretation inspired by the end of the world. In this way, our cuisine achieves balance and harmony through its presentation, aroma, and texture, making it perfect for enjoying with family, friends, or your loved one.





qawasqar

RESTAURANT

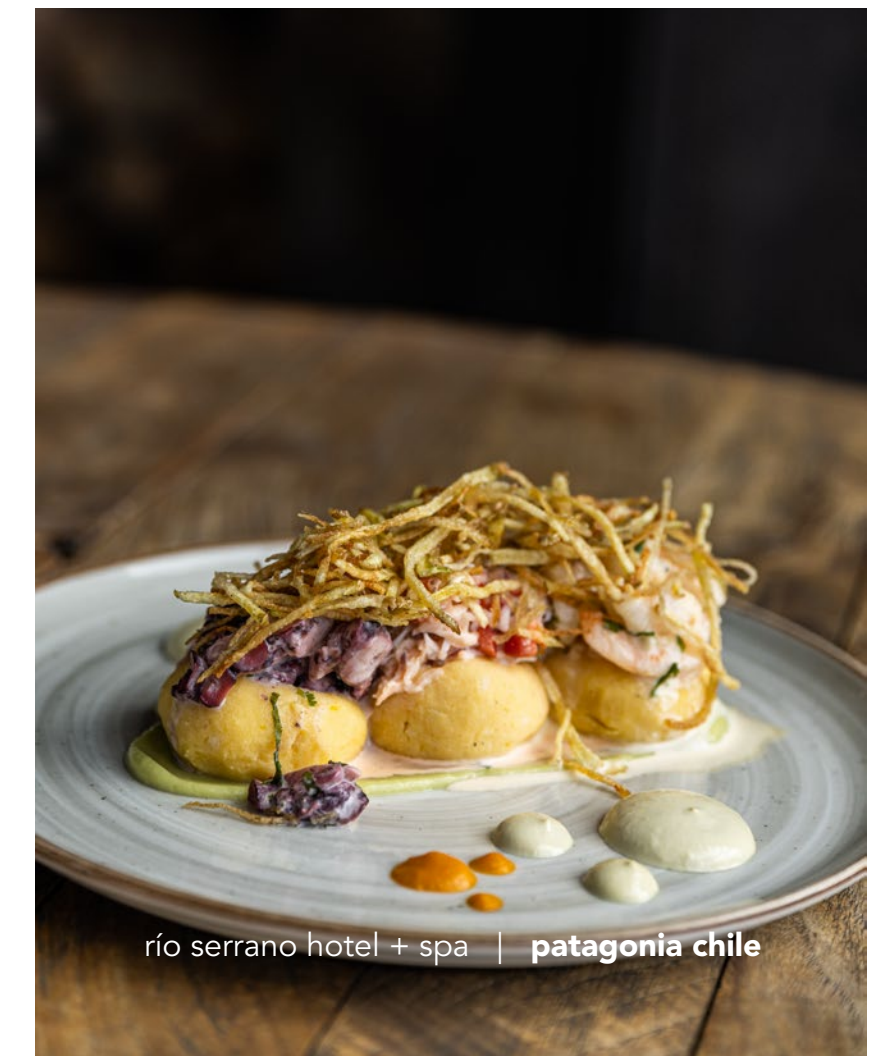
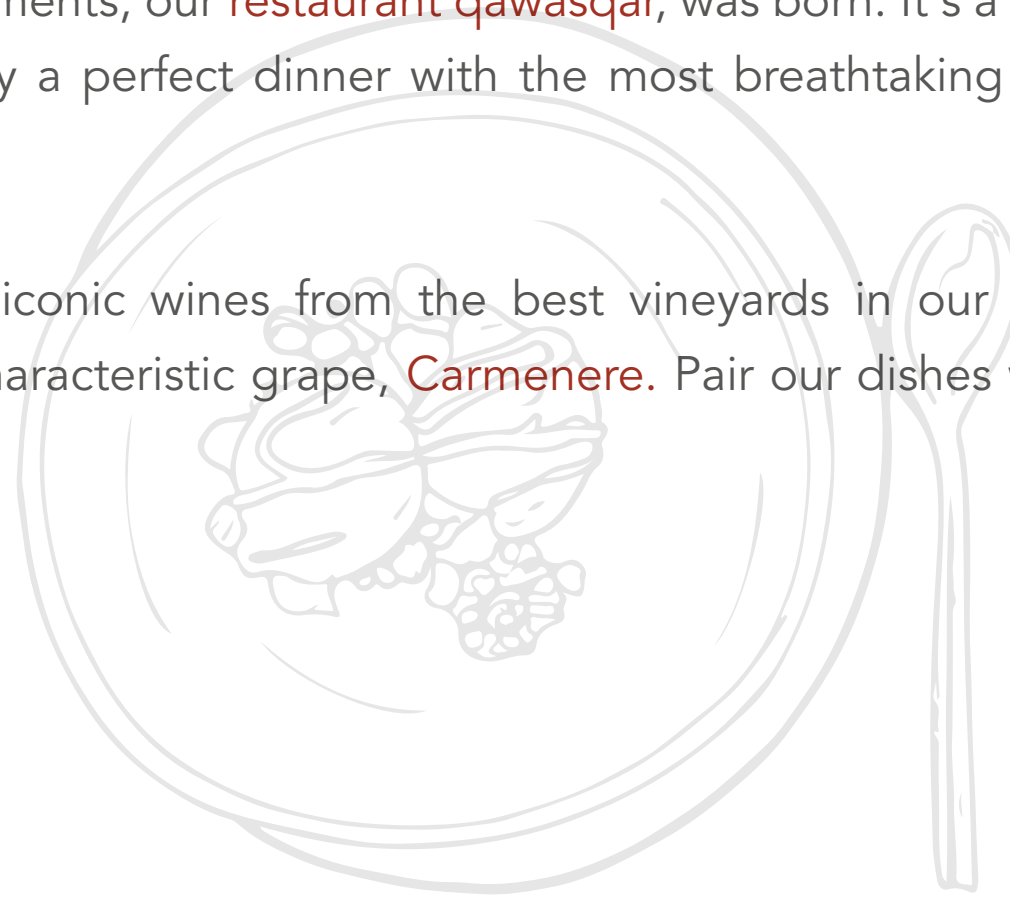


qawasqar

RESTAURANT

Inspired by a shearing shed, characteristic of the Magallanes region, with Patagonian colors and elements, our **restaurant qawasqar**, was born. It's a place of elegant simplicity to enjoy a perfect dinner with the most breathtaking view of Torres del Paine.

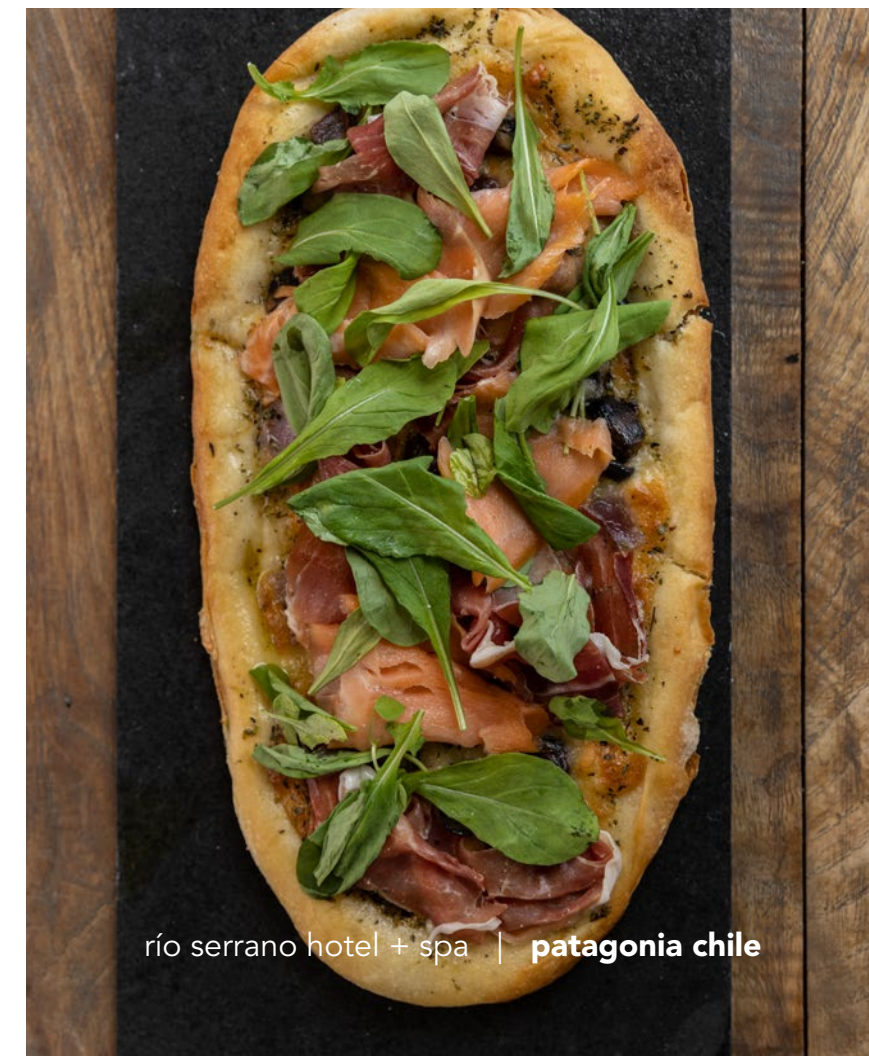
Our wine cellar features iconic wines from the best vineyards in our country, including the nationally characteristic grape, **Carmenere**. Pair our dishes with the finest wines from Chile.





Our **Agostini Bar** is characterized by its cozy and comfortable facilities, accompanied by an extraordinary view of the Paine Massif, perfect for enjoying the incredible sunsets that **Patagonia** gifts us after a day of adventure.

Our **signature cocktails** are inspired by regional and national elements such as Calafate, Araucano Liqueur, Rhubarb, and Palm Honey. Additionally, our bar offers 100% craft beers originating from Chilean Patagonia.





Share unforgettable moments with an **unforgettable view**



## terrace

---

We have a **112 m<sup>2</sup>** terrace, which is characterized by its privileged view of the Paine Massif and for having one of the largest courtyards in the area.

Adjacent to our terrace is the barbecue area, where the traditional '**cordero al palo**' (lamb on a spit), an iconic dish of Magellanic cuisine, is prepared.

In this area, we also feature other products such as salmon, 'sopaipillas' with 'pebre' (a Chilean condiment), prawns, and vegetables. All of them are carefully selected by our chef, **Walter Leal**, and when combined with the Patagonian wind, they create a unique and unforgettable spectacle



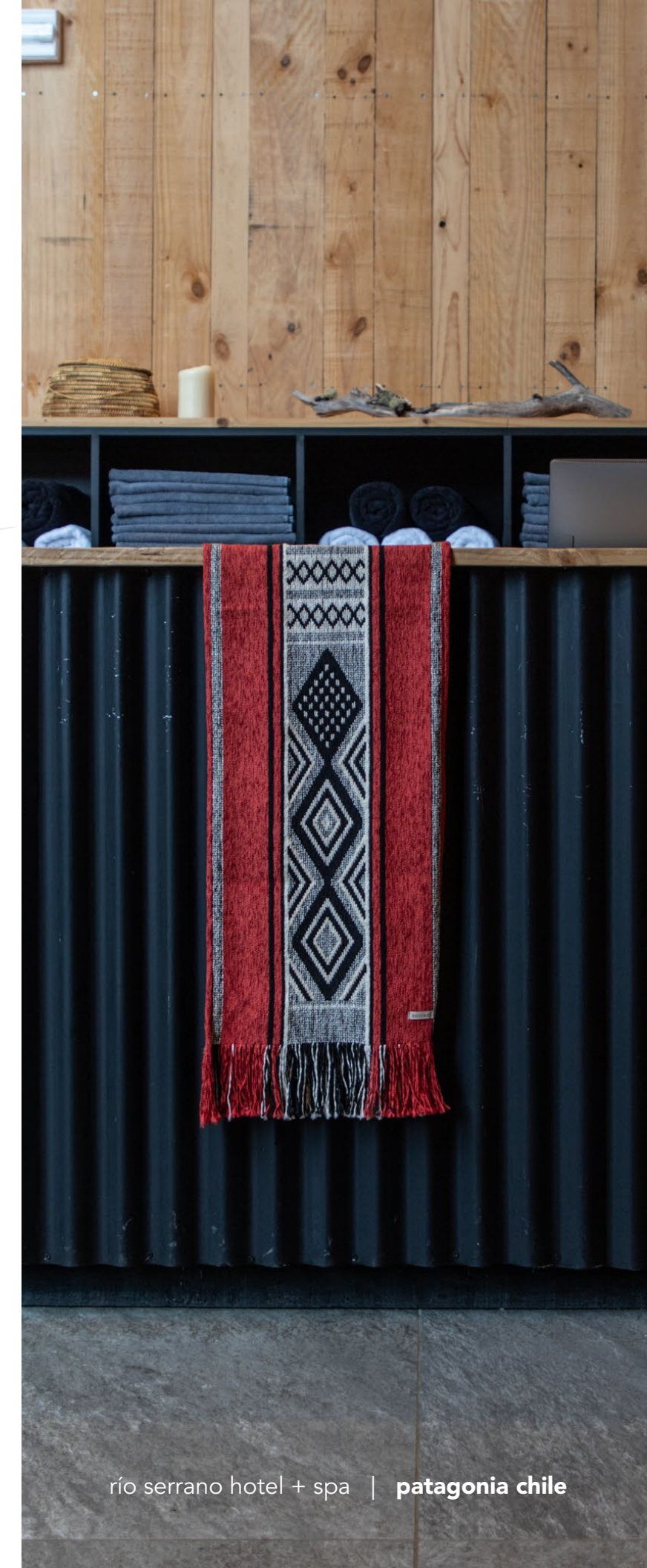


---

Explore the culture of our ancestors at our **KOLAF** museum

Amidst the valley, mountains, and the flowing river, you'll find our spa, a place where the scent of nature and the constant flow of the **Serrano River** create a relaxing atmosphere, conveying a sense of peace and tranquility. Our spa, inaugurated in 2018, features a heated pool, sauna, massages, gym, relaxation areas, changing rooms, and a breathtaking view of the **Paine Massif**.

This building has 3 levels and covers **1.100 m<sup>2</sup>**, and it is inspired by the **Aonikenk** and **Kawésqar** cultures, indigenous people of the region who inhabited these Patagonian lands 10.000 years ago





Immerse your body and mind in **pure sensations**

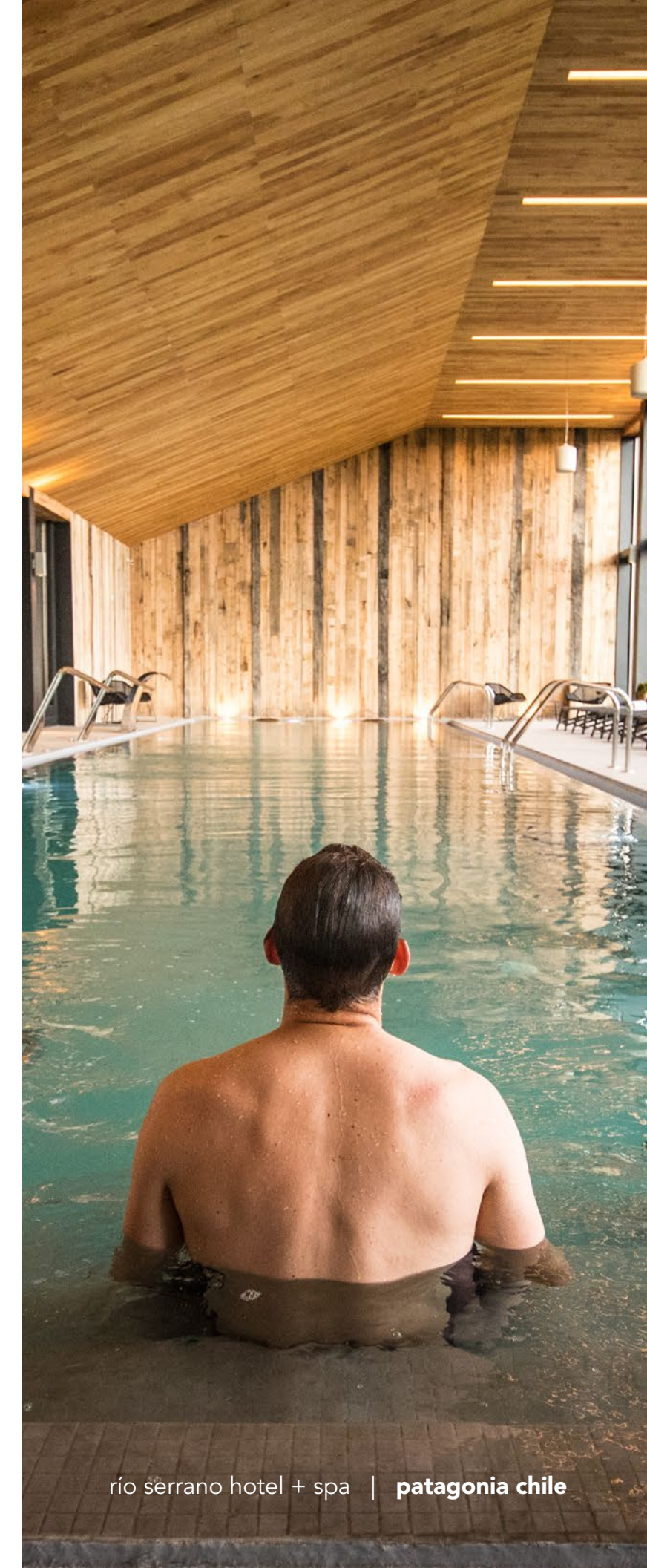
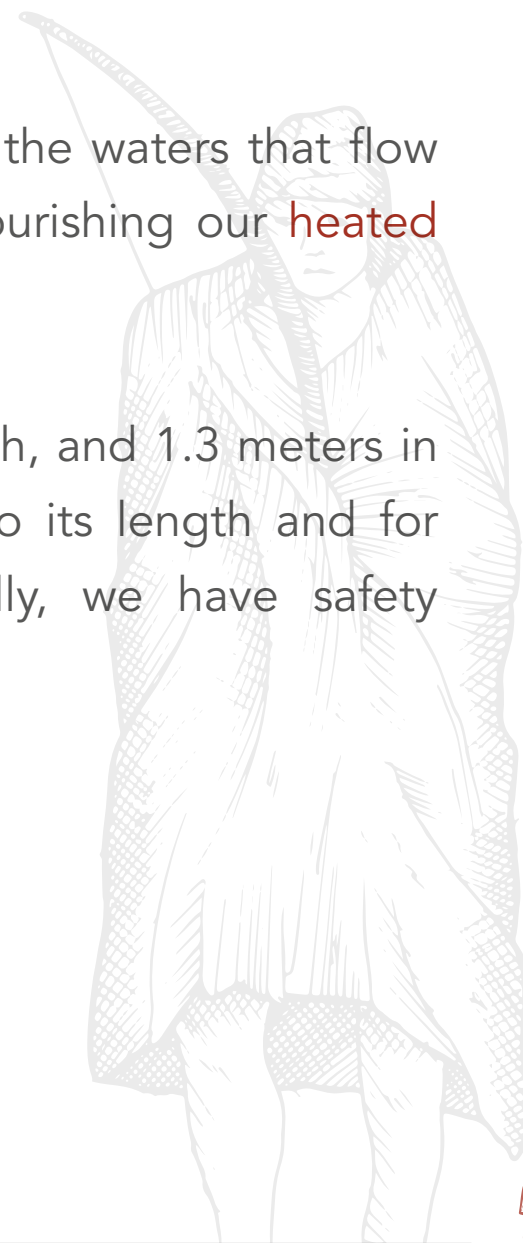
# pool

---

The **pool** area covers 270 m<sup>2</sup>, featuring a relaxation area with sofas, chairs, and sun loungers, as well as a balcony where you can appreciate the majesty of the Paine Massif.

Immerse your body and mind in pure sensations, thanks to the waters that flow from ancient glaciers through the **Serrano River**, directly nourishing our **heated pool**.

The size of our pool is 21 meters in length, 5 meters in width, and 1.3 meters in depth. This area is designed for leisurely swimming due to its length and for enjoying its waterfalls and hydrotherapy jets. Additionally, we have safety equipment such as a rescue pole and a lifebuoy





Continue your workout routine at the **end of the world**

---

# gym

---

Visit our **gym** and don't miss your daily exercise routine just because you're at the end of the world. It's an excellent addition to your training before heading out on an expedition around the national park.

Our gym covers an area of **35 m<sup>2</sup>** and offers various exercise machines, including a treadmill, elliptical machine, stationary bike, a variety of weights, and a multifunctional bench perfect for abdominal workouts



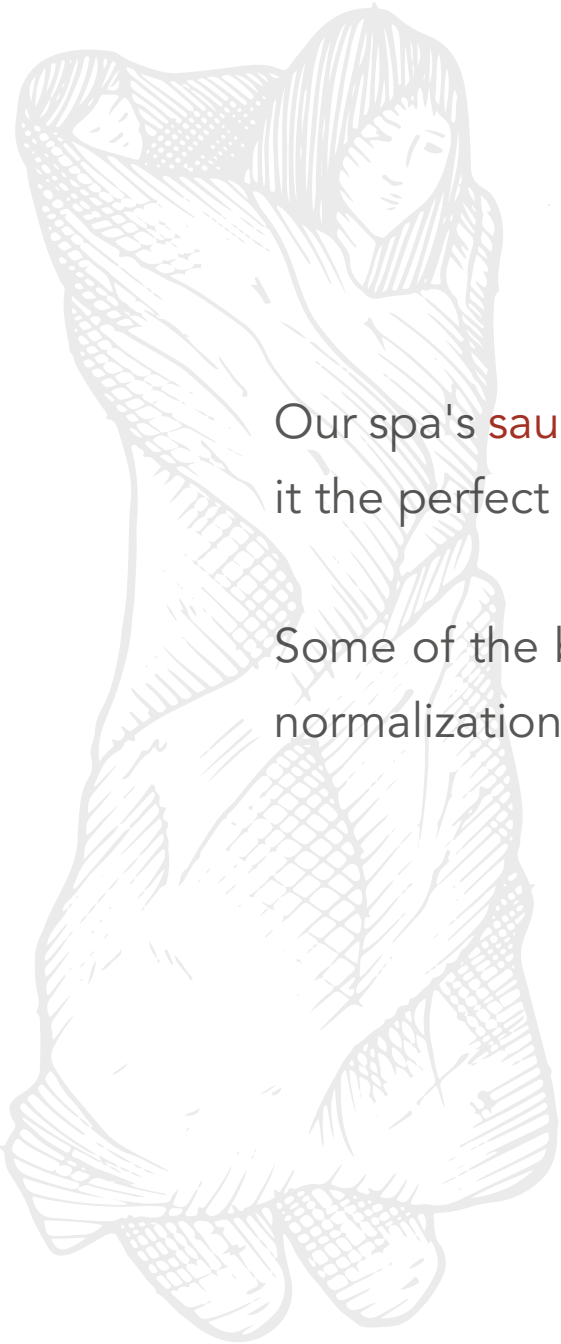


Recover, revitalize, and rejuvenate in our **sauna**



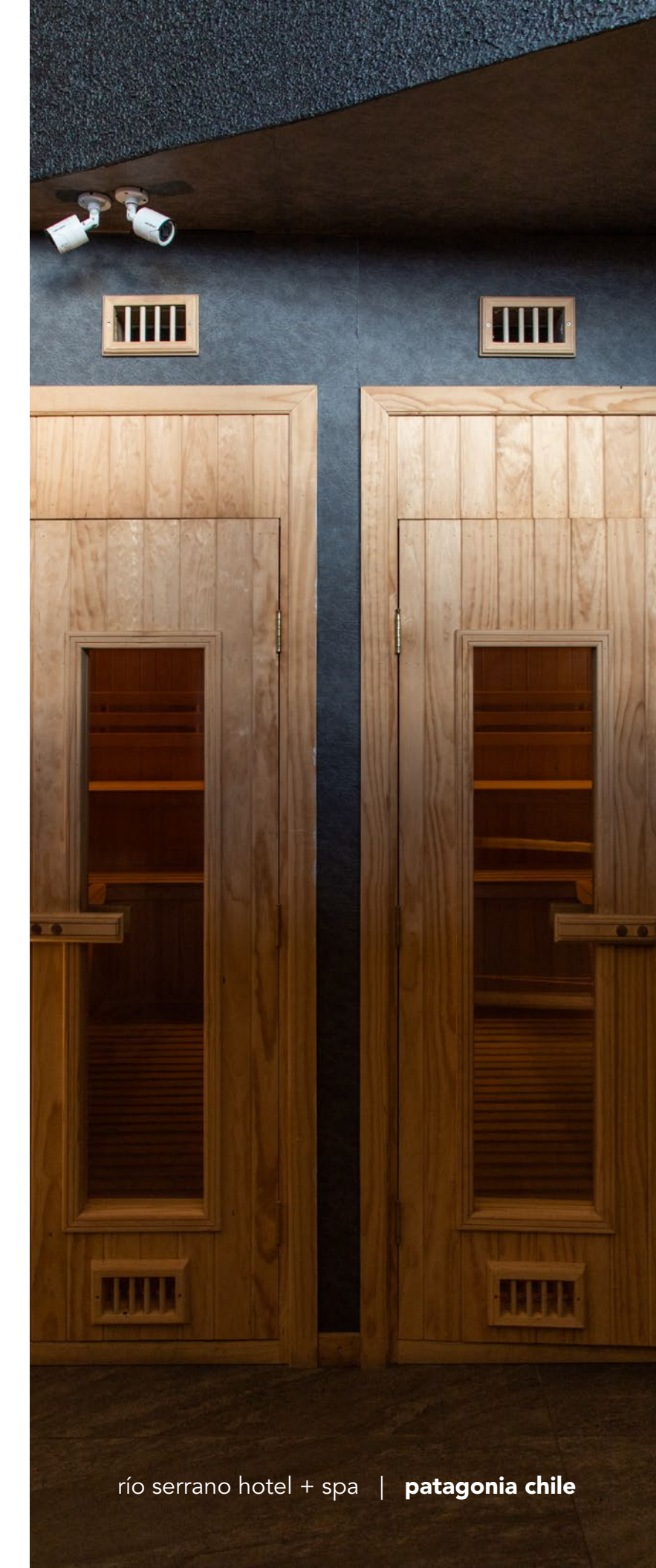
## sauna

---



Our spa's **sauna** will help you release toxins and improve blood circulation, making it the perfect complement after a workout in our gym.

Some of the benefits of the **sauna** include muscle relaxation, increased longevity, normalization of blood pressure, and improved skin cleansing





---

Experience **relaxation** and therapy at its best

## — massages, rituals, and treatments —

Experience a relaxing and therapeutic journey with our **rituals**, which enhance your energy, providing physical and mental effects to the body.

Our **treatments** offer personalized care formulated with high-quality, cruelty-free products tailored to individual needs.

**Massages** are a relaxing and therapeutic experience, with benefits that go beyond the physical level. We offer both intense and sensory massages.





Organize Your Event in **Patagonia**

## events

---

Located in the heart of Patagonia, **río serrano hotel + spa** features event rooms of up to 240 m2 and a maximum capacity of 200 people.

We offer functional and versatile rooms that can be separated or joined together thanks to their **movable walls**, allowing us to transform our large hall into four spaces of 60 m2 each.

Our hotel has **108 rooms**, ideal for events such as weddings, conferences, and meetings that require accommodation.





Take the **río serrano** experience home by purchasing souvenirs from our store

---

# store

---

Located in front of the wonderful Paine massif, you will find our 55 m2 **store**, a place where guests can buy souvenirs and typical gifts from our region so that their journey through **the end of the world** is never forgotten.







río serrano  
hotel + spa

[www.rioserrano.com](http://www.rioserrano.com) |  /rioserranopatagonia |  /rioserranohotelspa

**Particulares** : [reservas@rioserrano.com](mailto:reservas@rioserrano.com) | **Agencias** : [reservafit@rioserrano.com](mailto:reservafit@rioserrano.com) · [reservagrupo@rioserrano.com](mailto:reservagrupo@rioserrano.com)