



THE MASSIF

2025 - 2026

# EXPEDITION DESCRIPTIONS



# BASE TOWERS

The Base Torres viewpoint is one of the most impressive, iconic and demanding hikes. The total duration is approximately 8 hours: 4 hours of ascent and 4 hours of descent.

We begin the trek by crossing the Ascencio River in direction to the Chileno Camping, which marks the halfway point of the trail. At this location, we take a necessary pause to assess the meteorological and physical conditions.

From this point, we will continue ascending surrounded by an amazing lenga forest and glacier streams, until we get to the last flat stretch before the steep and rocky glacier moraine. This final segment requires a considerable effort that will be compensated with the arrival at one of the most impressive viewpoints of the Cono Sur: the three imposing Paine Towers that will rise up before you.

This hike has a high physical demand and takes you through the ever-changing Patagonian weather, awakening your senses as you take in the beauty of the region's flora and fauna throughout the day.

## Includes:

- Lunch box: Sandwich of your choice, brownie, dried fruits, fresh fruit, water, and juice.
- Food boards and beverages at the end of the activity.
- Bilingual guide Spanish and English.
- Trekking poles and crampons (provided when required due to weather conditions).
- Transfer to and from río serrano hotel - spa, 3 hours approx.



22 km  
(13.6 mi)



12 - 13 hrs.



120 m - 875 m  
msnm



Difficulty  
HIGH



# FRENCH VALLEY

The French Valley is another iconic viewpoint within the Paine Massif, offering a trail filled with a diversity of landscapes and with an average duration of approximately 7.5 hours: 4 hours of ascent and 3.5 hours of descent.

We will begin the excursion sailing in a catamaran for 30 minutes in Pehoé lake until we get to the first point: Paine Grande refuge. We will start hiking across varied terrain, including flat and rocky sections. Throughout this first stretch we will have the imposing Paine Horns as a background.

Upon reaching Italiano Camp, which marks about 60% of the moderate ascent, we take a pause to assess weather and physical conditions. From this point, the trail becomes steeper as we climb for about an hour through Magellanic forest and a glacial moraine, heading toward the French Valley viewpoint.

Once at the viewpoint, we will be delighted by the mountain range that belongs to the Paine Massif, a hanging glacier, lush forests, and multiple water formations.

This hike demands a high level of physical effort due to the constant elevation changes and a steep, challenging final section. Nevertheless, the panoramic view of the valley will be unforgettable.

## **Includes:**

- Lunch box: Sandwich by your choice, brownie, dry fruits, fruit, water and juice.
- Food boards and beverages at the end of the activity.
- Bilingual guide Spanish and English.
- Trekking poles and crampons (when required due to weather conditions).
- Catamaran tickets Lake Pehoé for the Pudeto - Paine Grande crossing, round trip.
- Transfer from and to río serrano hotel + spa, 2 hours approx.



21 km  
(13 mi)



10 - 12 hrs.



65 m - 512 m  
msnm



Difficulty  
HIGH



# GREY TRAIL

The Grey Trail will take us to witness a part of the Southern Patagonian Ice Field. This hike has an average duration of 8 hours: approximately 3.5 hours of descent and 4.5 hours of ascent.

We will start the excursion by sailing on a catamaran for 30 minutes across Pehoé lake to reach the first point: the Paine Grande refuge. From there, we head into the Grey Valley, walking along the slopes of the imposing Paine Grande, the highest peak in the entire Paine Massif.

After about an hour and a half of trekking, we reach the De Agostini viewpoint, and then continue on to our final destination: the Grey Glacier viewpoint. From here, we will enjoy a spectacular 3-kilometer-wide panoramic view of the glacier wall, the Nunatak, and the presence of icebergs on the lake's beach.

This hike is highly demanding, with constant ascents and descents over rocky terrain. Nevertheless, the view of the glacier and the surrounding mountains make the journey an unforgettable experience.

## Includes:

- Lunch box: Sandwich by your choice, brownie, dry fruits, fruit, water and juice.
- Food boards and beverages at the end of the activity.
- Bilingual guide Spanish and English.
- Trekking poles and crampons (when required due to weather conditions).
- Catamaran tickets Lake Pehoé for the Pudeto - Paine Grande crossing, round trip.
- Transfer from and to río serrano hotel + spa, 2 hours approx.



24 km  
(14.9 mi)



10 - 12 hrs.



65 m - 450 m  
msnm



Difficulty  
HIGH



# PAINE LOOKOUTS



7 - 8 hrs.



Difficulty  
LOW

This tour is designed with a photographic and interpretive focus, ideal for those who wish to explore Torres del Paine National Park without engaging in long hikes.

The Paine Lookouts Tour, which lasts approximately 7 hours by vehicle, takes us across the park from west to east. Along the way, we stop at various natural and panoramic viewpoints to admire the park's diverse landscapes, mountains, lakes, rivers, forests, waterfalls, steppes, and historical sites, as well as being surprised by the presence of local wildlife in each area.

We conclude this experience by sharing a picnic while appreciating the unique scenic beauty that this land offers us.

## **Includes:**

- Food boards and beverages during the activity.
- Bilingual guide Spanish and English.
- Transfer from and to río serrano hotel + spa, duration 8 hours approx.



# AONIKENK



The Aonikenk trail is named in honor of the indigenous tribe that inhabited this territory. It begins at the Sarmiento entrance with a hike that lasts approximately 2.5 hours, crossing a landscape of pampa and patagonian steppe.

Upon reaching the top of the trail we will encounter a set of rocks that house cave paintings created 7,000 years ago. During the journey it is possible to spot local fauna, mainly herds of guanacos who are the most numerous inhabitants of Torres del Paine National Park.

## **Includes:**

- Snack: chips, cereal bar, fruit and water.
- Bilingual guide Spanish and English.
- Trekking poles and crampons (when required due to weather conditions).
- Transfer from and to río serrano hotel + spa, duration 2 hours approx.



6.3 km  
(3.9 mi)



4 - 5 hrs.



159 m - 323 m  
msnm



Difficulty  
LOW - MEDIUM



# SARMIENTO LAKE

We will border around Sarmiento Lake and its intensely blue waters on a light hike averaging 3 hours, where we will appreciate the flora and fauna of the area.

This trail will take us to the beach of the park's largest lake, where we will observe its white rocky walls called thrombolites: living fossils of calcium carbonate that began forming during the last glaciation.

It is an accessible excursion for people who wish to engage in less demanding activities.

## **Includes:**

- Snack: chips, cereal bar, fruit and water.
- Bilingual guide Spanish and English.
- Trekking poles and crampons (when required due to weather conditions).
- Transfer from and to río serrano hotel + spa, duration 1.5 hours approx.



5 km  
(3.1 mi)



4 - 5 hrs.



125 m - 65 m  
msnm



Difficulty  
LOW - MEDIUM



# TORO LAKE



One of the most stunning views, the Toro Lake viewpoint stands out for being the largest waterbody in the region. This walk has a duration of 4 hours, with a medium to high level of difficulty.

The first stretch requires a considerable effort, however, it will provide us with the opportunity to contemplate the hydrographic network of the Paine river that crosses the entire National Park before flowing into the imposing Toro Lake.

We will proceed through a stony and steep terrain, gaining altitude among southern nothofagus, to be surprised by the opening to the pre-andean scrubland, which will gift us with a wide view of the unique Paine Mountain Range appreciating its lake system, inner valleys, and patagonian steppe.

## **Includes:**

- Snack: chips, cereal bar, fruit and water.
- Bilingual guide Spanish and English.
- Trekking poles and crampons (when required due to weather conditions).
- Transfer from and to río serrano hotel + spa, duration 1 hour approx.



5 km  
(3.1 mi)



5 hrs.



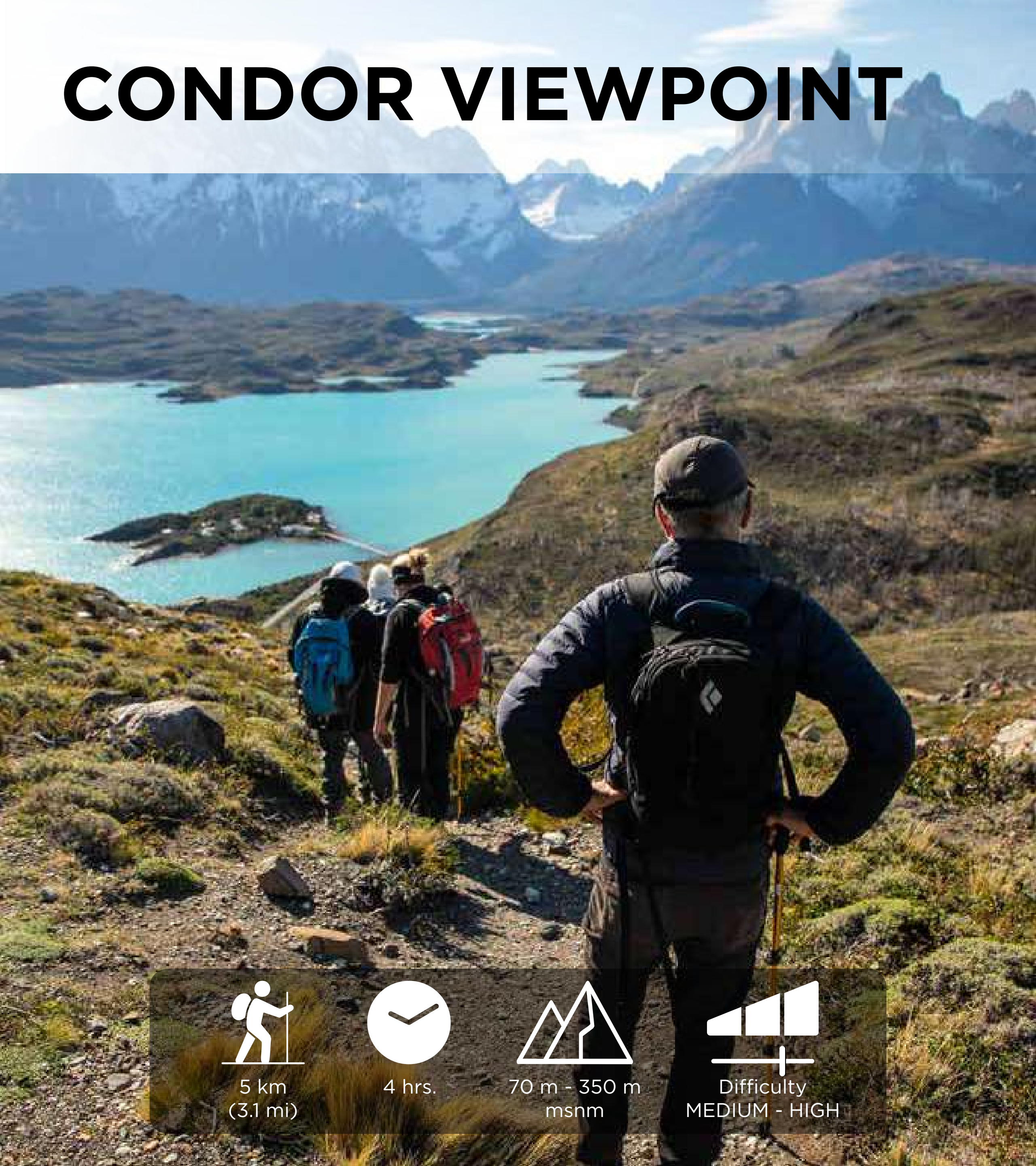
72 m - 430 m  
msnm



Difficulty  
HIGH



# CONDOR VIEWPOINT



With a hiking duration of 2.5 hours and a medium to high difficulty level, the Condor Viewpoint offers us one of the best panoramic views of Pehoé lake, as well as the entire Paine Massif.

We will move towards a challenging slope, along a rocky trail where we will traverse a short but complicated ascent in a rocky area with strong winds typical of Patagonia, making this expedition a true adventure.

This viewpoint owes its name to the presence of condor nesting sites on its upper slopes, where condors could be spotted.

## **Includes:**

- Snack: chips, cereal bar, fruit and water.
- Bilingual guide Spanish and English.
- Trekking poles and crampons (when required due to weather conditions).
- Transfer from and to río serrano hotel + spa, duration 1.5 hours approx.



5 km  
(3.1 mi)



4 hrs.



70 m - 350 m  
msnm



Difficulty  
MEDIUM - HIGH



# CUERNOS VIEWPOINT



The Cuernos Viewpoint trail has an average duration of 3 hours, allowing us to observe up close and head-on one of the iconic views of Torres del Paine National Park: the imposing Cuernos del Paine.

At our first stop, the Salto Grande viewpoint, we will be able to observe its powerful 14 meters high waterfall that emerges from Nordenskjöld lake, giving life to Pehoé lake with its beautiful turquoise color. We will continue along the trail towards the Cuernos Viewpoint, where we will contemplate the fusion of sedimentary basaltic and granitic rock, making this view one of the most impressive.

Being one of the shortest and easiest hikes, it is recommended for all types of people. Strong winds will be present in this area, making this activity an intense and unforgettable experience.

## **Includes:**

- Snack: chips, cereal bar, fruit and water.
- Bilingual guide Spanish and English.
- Trekking poles and crampons (when required due to weather conditions).
- Transfer from and to río serrano hotel + spa, duration 1.5 hour approx.



7 km  
(4.3 mi)



4.5 hrs.



60 m - 177 m  
msnm



Difficulty  
LOW - MEDIUM



# FERRIER VIEWPOINT



The Ferrier Viewpoint excursion, with a duration of 4 hours walk, has a steep slope that positions it as the most difficult and demanding half day trek.

This trail located in the western sector of the park crosses a majestic forest of coigüe trees, habitat of endemic birds and also the Huemul. Additionally, it offers a unique panoramic view as it is possible to observe lakes of the National Park and the Grey, Zapata and Pingo glaciers belonging to the Southern Ice Fields.

## **Includes:**

- Snack: chips, cereal bar, fruit and water.
- Bilingual guide Spanish and English.
- Trekking poles and crampons (when required due to weather conditions).
- Transfer from and to río serrano hotel + spa, duration 1 hour approx.



5 km  
(3.1 mi)



5 hrs.



50 m - 700 m  
msnm



Difficulty  
HIGH



# NUTRIA HORSEBACK RIDE



A different activity that allows contact with a noble animal like the horse. It has a duration of 1.5 to 2 hours starting from the stables, where safety equipment will be provided along with the necessary instructions for proper horse handling.

From there our adventure through Serrano Village will begin heading towards the foot of the Chacabuco mountain range to immerse ourselves in an iconic magellanic forest, where we can appreciate the flora and fauna. We will continue the journey until we reach the Nutria river area and then border the Serrano river to approach the confluence with the Grey river where we will observe its different colors.

The type of saddle used in our horseback rides are touring saddles. All horses available are native from the region called "criollos", they are reliable and in good physical condition since they are maintained and supervised daily by our "baqueanos".

**Conditions:**

- Minimum height: 1.50 m / 4.9 ft
- Maximum weight: 95 kg / 210 lbs

**Includes:**

- Helmet and gaiters.



7 km  
(4.3 mi)



1.5 - 2 hrs.



Difficulty  
LOW - MEDIUM

## NOTES

- Trotting and/or galloping is not allowed.
- This activity considers a mandatory induction.



# GREY III NAVIGATION

Lago Grey Company



To begin this glacier visit the first step is to check-in for the navigation. From there, we will have an hour to reach the catamaran before the set sail. We will start with a short but demanding walk from the Pingo guard station parking area for 2 km towards the dock located at the end of Grey beach.

Once on the boat we will sail 17 km across Grey lake, characterized by its grayish color due to the amount of glacier sediments and intense blue icebergs that we will see floating along the way. We will traverse the glacier from East to West with a width of 1.2 km and heights of up to 40 meters. At the end of the tour, we will return to Grey beach where we will retrace our steps back to the Pingo guard station parking area.

**Includes:**

- Juice or pisco sour.

Grey III Navigation	1	2	3	4
Check-in	9:00 hrs.	12:00 hrs.	15:00 hrs.	18:00 hrs.
Set sail	10:00 hrs.	13:00 hrs.	16:00 hrs.	19:00 hrs.
Refuge arrival	10:45 hrs.	13:45 hrs.	17:30 hrs.	19:45 hrs.
Refuge set sail	11:00 hrs.	14:00 hrs.	17:45 hrs.	20:00 hrs.
Navigation arrival	12:45 hrs.	15:45 hrs.	18:45 hrs.	21:30 hrs.

## NOTES

- If you require round-trip transfer service for Grey III navigation, this can be arranged in advance with your The Massif reservations executive, subject to availability and in accordance with the requested navigation schedule. Additional fee applies for this service.
- The schedules are provided by Lago Grey company.
- Difficulty level - low to medium.
- The service is subject to cancellation due to weather conditions or directions by the Lago Grey company. The set sail of each navigation is confirmed in the navigation desk located in Hotel Lago Grey.
- During September two departures are available. In May, only one departure is available on Wednesdays and Saturdays, with a different schedule.



# SERRANO RIVER NAVIGATION

Solo Glaciares Company



To start this activity we must walk approximately 15 minutes from río serrano hotel + spa to the dock located in Hotel del Paine.

We will begin navigating the Serrano river by boat and after a 30-minute journey we will arrive at the impressive Serrano river fall where we will disembark to cross a beautiful native forest and board a zodiac. Our next stop is the Ultima Esperanza fjord, where after arriving at Bernardo O’Higgins National Park, we will walk its walkways admiring the majestic Serrano glacier lagoon located at the foot of the Imposing Balmaceda mount.

On the way back, we will have the opportunity to watch the impressive Southern Ice Fields from the Tyndall lookout, an experience that will leave us speechless. Finally we will be back to the dock located at Serrano Village to end our adventure.

**Includes:**

- Entrance ticket to Bernardo O’Higgins National Park.

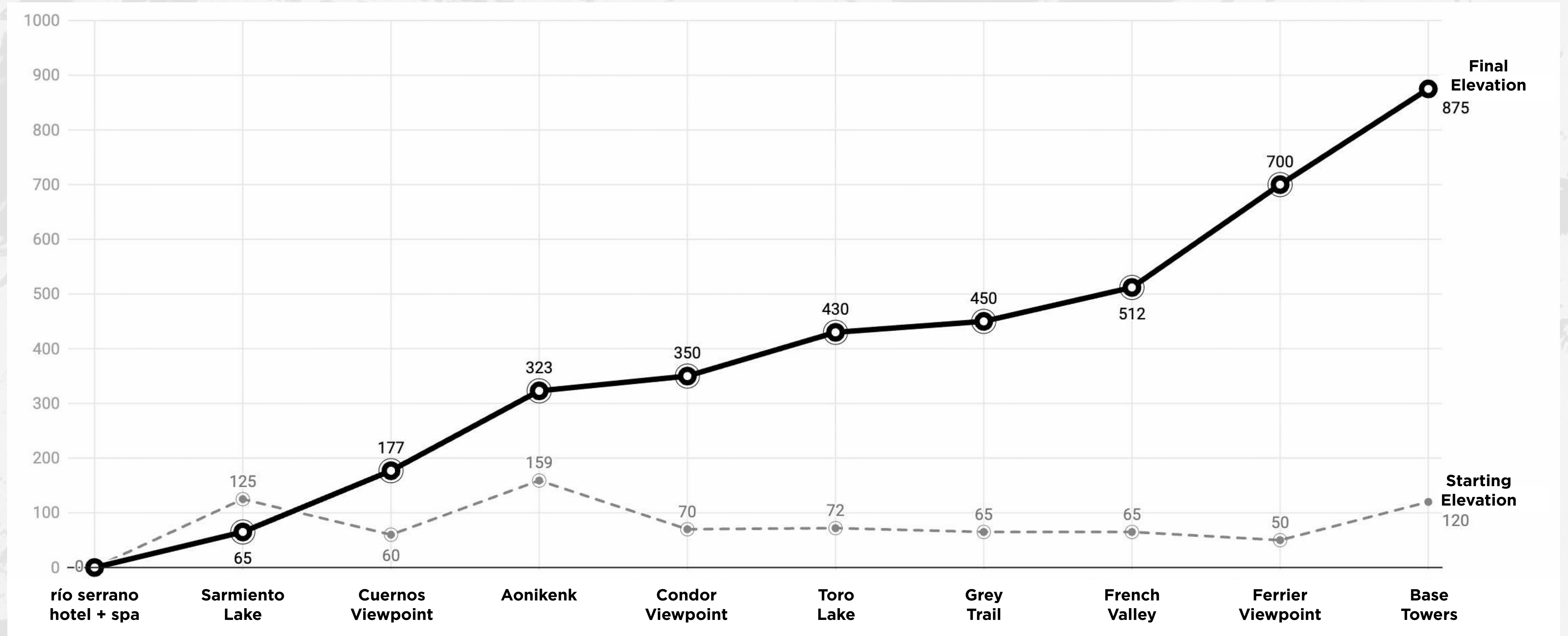
Set sail	8:30 hrs.
Arrival	14:00 hrs.

NOTES

- The schedule of the set sail must be confirmed at The Massif Information office on the previous day of the activity.
- The departure from río serrano hotel + spa must be by walking 30 minutes before the set sail.
- Difficulty level low to medium.
- The service is subject to cancellation due to weather conditions or directions by the Solo Glaciares company. The set sail of each navigation is confirmed at the front desk in Hotel del Paine.



# ALTITUDE PER EXPEDITION

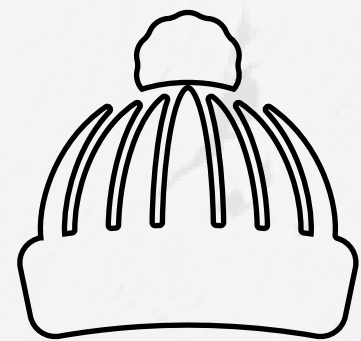




# WE RECOMMEND

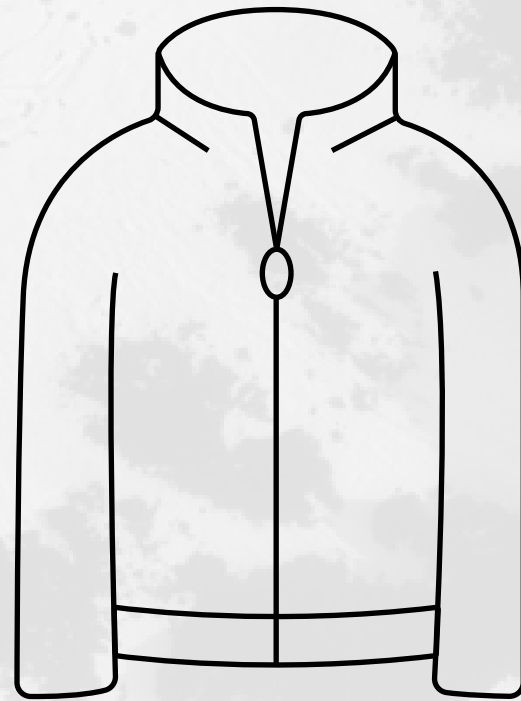
Due to the weather conditions that take place in the area it is indispensable to consider the next equipment for your visit in Torres del Paine National Park.

## Head



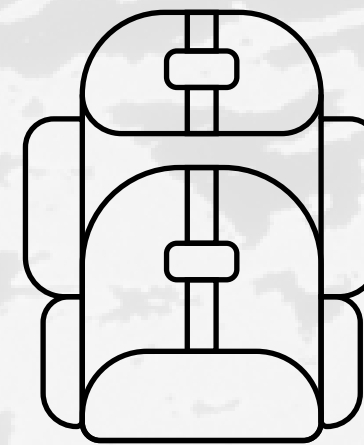
- Fleece hat or similar.
- UV-protection sunglasses.
- Neck gaiter.

## Upper Body



- Quick drying shirt.
- Second layer (fleece or similar).
- Waterproof jacket.
- Gloves.

## Waterproof Backpack



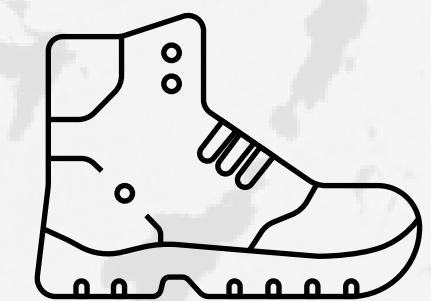
- Sunscreen.
- Water bottle.
- Lip balm.
- Insect repellent.

## Legs



- Quick-dry leggings.
- Waterproof trekking pants.
- Shorts for warmer days.

## Feet



- Long trekking socks
- High-ankle trekking boots





**THE MASSIF**

**contact** | [reservas@themassif.com](mailto:reservas@themassif.com)



[www.themassif.com](http://www.themassif.com)



[themassifchile](https://www.instagram.com/themassifchile)

